

THE LIVER CANCER/FATTY LIVER CONNECTION

DID YOU KNOW?

FASTEST GROWING CANCER — LIVER

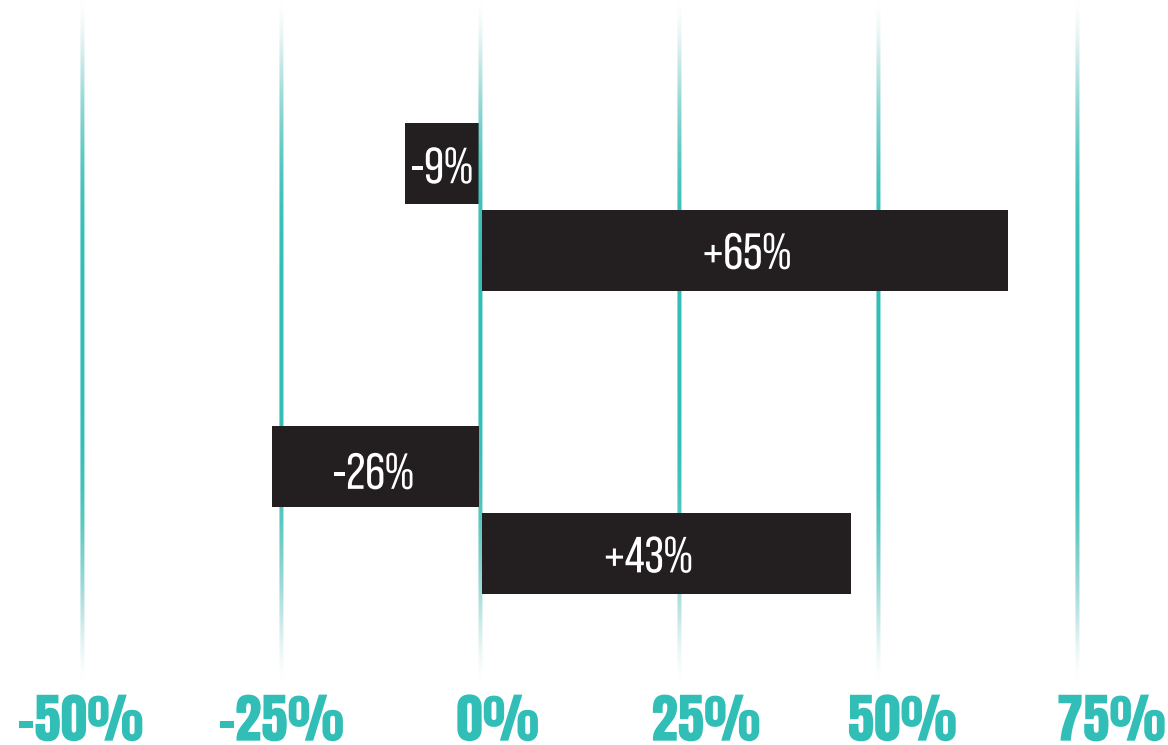
Changes from 2000 to 2019

CASES:

ALL CANCERS
LIVER CANCER

DEATHS:

ALL CANCERS
LIVER CANCER



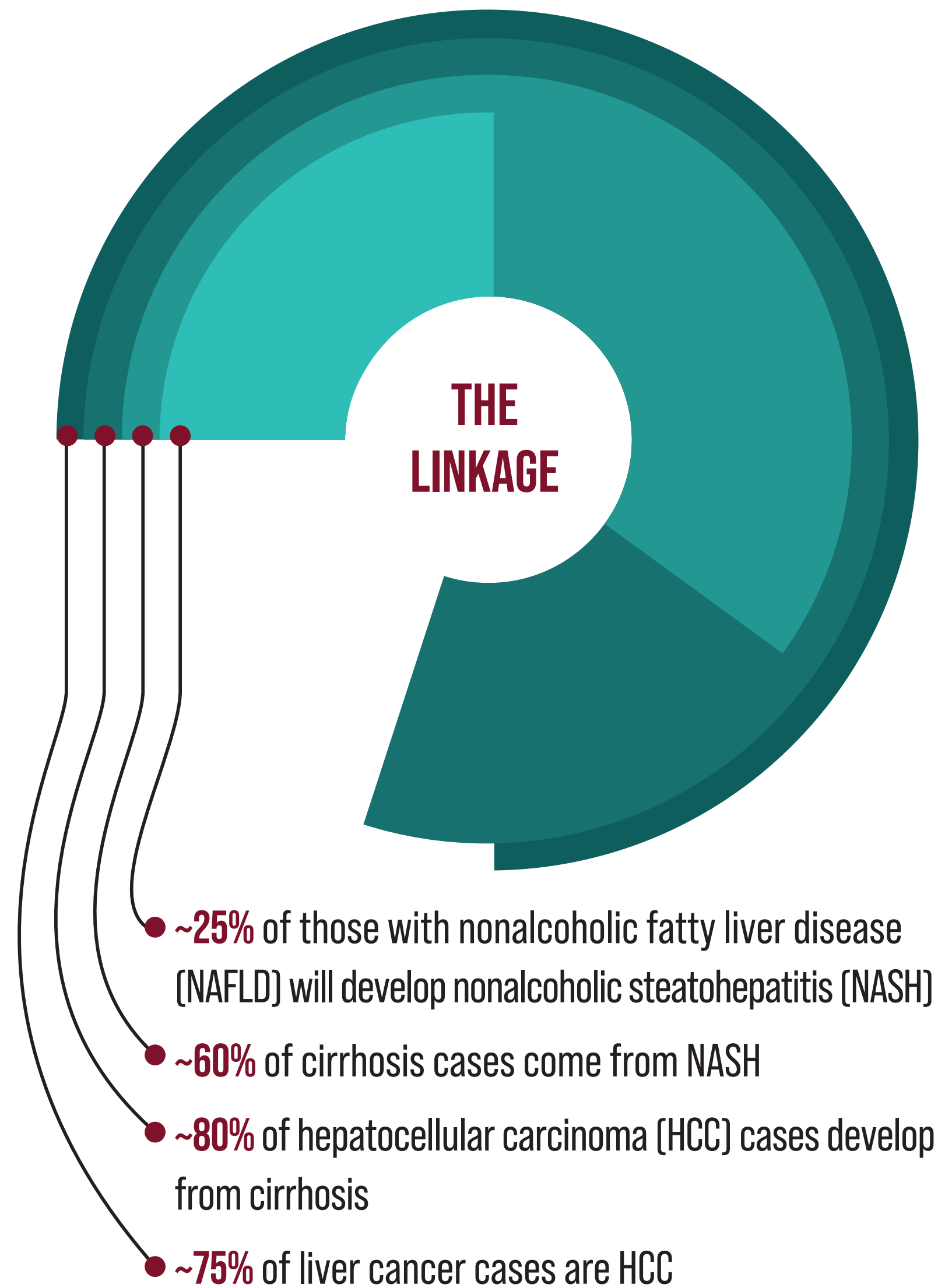
Per Central for Disease Control data.

GROWTH EXPECTED TO CONTINUE

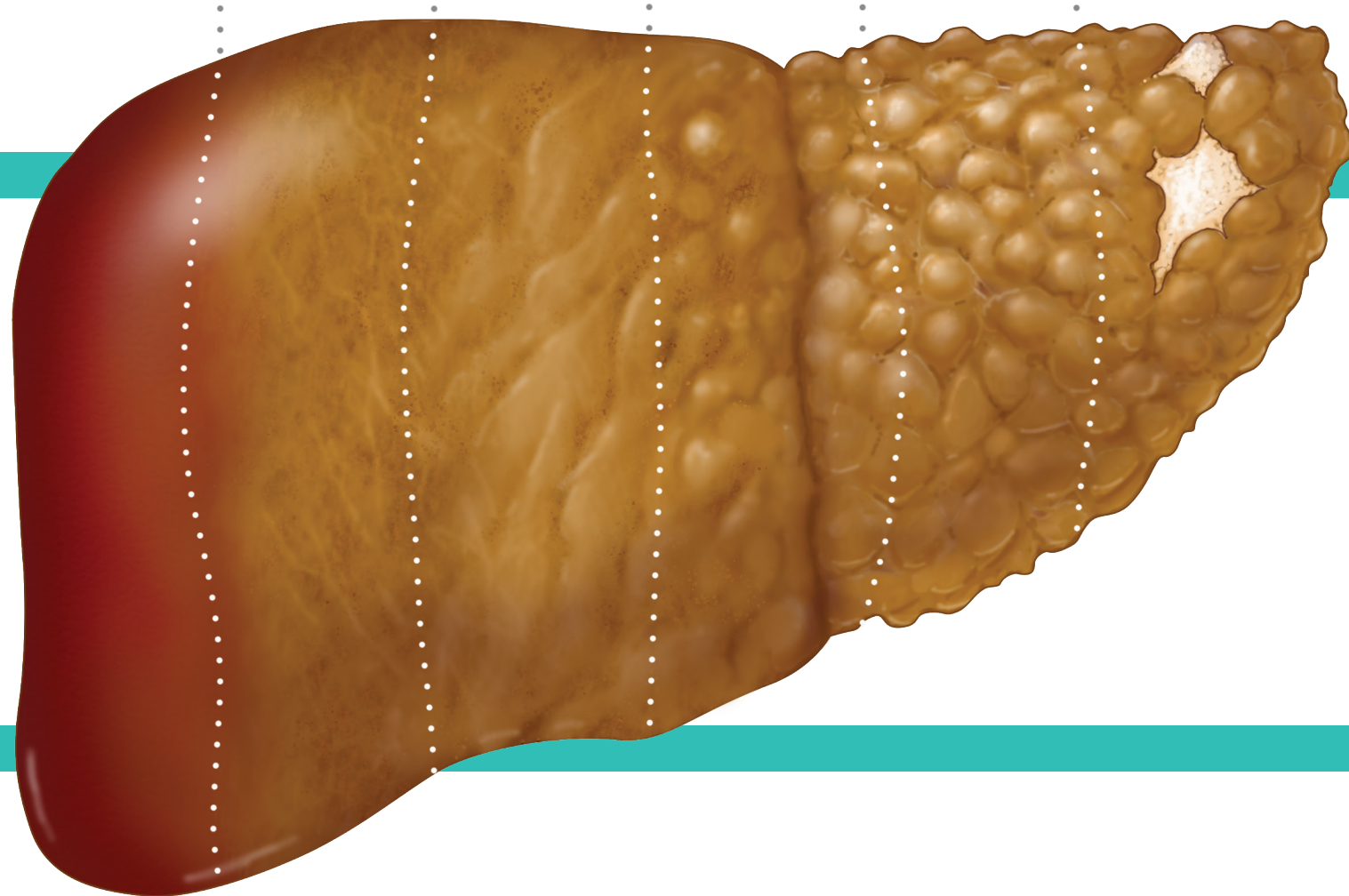
50% increase in both liver cases and deaths from liver cancer expected by 2040

LIVER CANCER IS ONE OF THE DEADLIEST CANCERS

20% survival rate after five years



F0 F1 F2 F3 F4 Cancer



WHAT IS HEPATOCELLULAR CARCINOMA?

HCC is a cancer that starts in hepatocyte cells, which are the main functional cells in the liver.

HCC is different from "secondary" liver cancers, which have spread to the liver from other organs.

